

Infection Control In the Home

What to look for in a Home visit

Gale Schulke, RN, CDN
Satellite Healthcare/WellBound





- Standard Precautions need to be maintained any place Dialysis is performed
- Home dialysis patients are managed under the same infection control guidelines as an in center patient.



DTX19

How does this interpret into Home?

1. During training patients and caregivers/partners are taught infection control practices

Handwashing

PPE

Work area cleanliness

Disposal of Dialysis single use items



Pre-admission Home visit

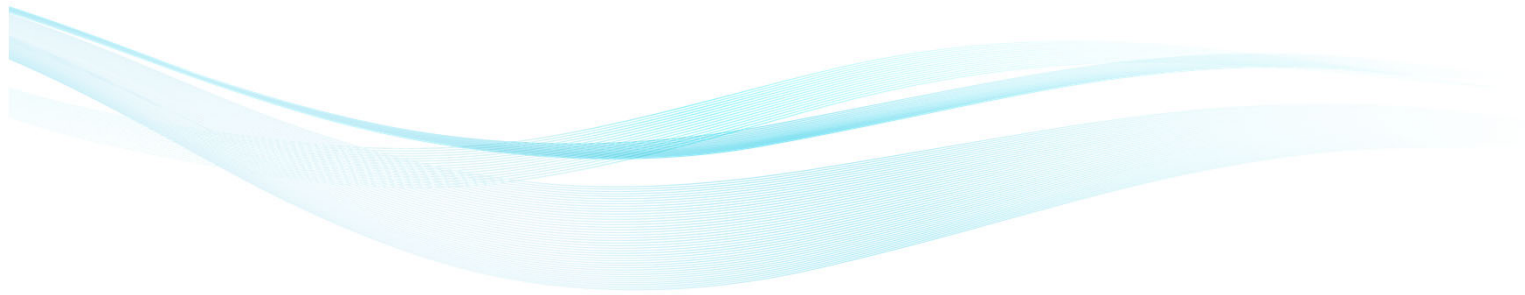
1. Clean appropriate area to do treatment with access to handwashing
2. Adequate space for supply storage
3. Adequate lighting in treatment area
4. Access to plumbing, electrical and sewage to support home modality
5. Clear unobstructed path to the outside of the living space
6. Appropriate interactions with family/significant other
7. Access to telephone



Home visit for PD/HHD – Done by RN, CCHT, MSW

1. Overall cleanliness
2. Pets – specifically pet odor from untrained animals
3. Hoarding tendencies
4. Rodents and Insects
5. Specifically the area where dialysis is going take place
 - A. How close is the bathroom
 - B. Is it clean and uncluttered?
 - C. In the case of HHD, where can the water be hooked up
 - D. Where can a drain line be run (both modalities)





DTX19

How is infection control practiced at Home?

Handwashing, Handwashing, Handwashing, Handwashing

Having a designated room or area to do the dialysis procedures

Keeping ancillary supplies contained in drawers and containers

Keeping the bathroom clean, clutter free.

Keeping pets out of the dialysis room.





PETS: Our furry and feathered friends

Fact: People have Pets



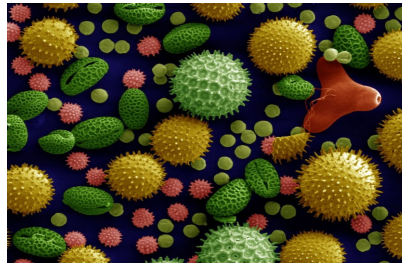
True or False: You cannot do home dialysis if you have a pet

False



Facts About Animals:

1. Animals have dander, fur, feathers, hair
2. Dander is microscopic and floats in the air



DTX19

TRUE OR FALSE: ANIMALS HAVE CLEAN SALIVA?

FALSE

Animal Saliva, particularly cats, contains a bacteria that can cause a serious infection. It is difficult to treat, and can turn to sepsis.

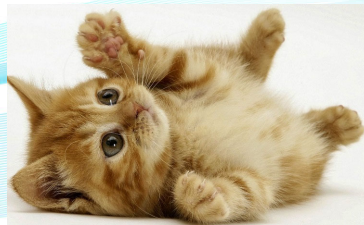
True or False: The only way to get an infection is directly from the saliva?

FALSE



Do's and Don'ts of Pets and Dialysis

- Keep pets out of the room, especially during connections and disconnections
- Cats like warm, high places. Dialysis bags are warm and soft and are up off the ground.
- Cats have claws. Cats like to “Pad” on warm soft places. Cats like to play with objects that move and twitch. Dialysis tubing twitches and moves.



DOGS



- Dogs can be taught.
- Less of an issue than cats
- Can be a great companion for a patient
- Should still be kept out of the room during connections and disconnections
- Area still needs to be kept free of fur, dander.

What to do with all the Waste



Tubing, bags, boxes, plastic covers, and so forth

1. All of the waste from Peritoneal Dialysis is clean waste.
2. The drainage is treated the same as urine, so down the drain.
3. The bags and tubing are not recyclable at this time.
4. Although HHD involves blood, it is still considered clean waste in most places*
5. Drainage is the same as for PD, down the drain.
6. The bags and tubing are not recyclable at this time.

* Different counties and States have different regulations. Know what your regulations are by calling the waste programs in your area.



Needles must be placed in a proper container and disposed of according to your local regulations.*



* Again, different regulations for different States and Counties



To summarize:

- Caregivers must wear PPE for PD
- Everyone wears PPE for HHD
- Area needs to be clean and uncluttered
- Bathroom needs to be clean and uncluttered
- Pets need to be contained.
- Trash is disposed of in the usual manner or per local regulations.
- All Sharps are disposed of in rigid containers designed for that purpose

